

**RAF LINTON-ON-OUSE [EGXU]**

Yorkshire

**CURRENT UNITS**

- Royal Air Force
- RAF Linton-on-Ouse Flying Wing
- 72 (R) Squadron Tucano T1
- 207 (R) Squadron Tucano T1
- Central Flying School Tucano T1

- University Air Squadron Yorkshire Tutor T1\*

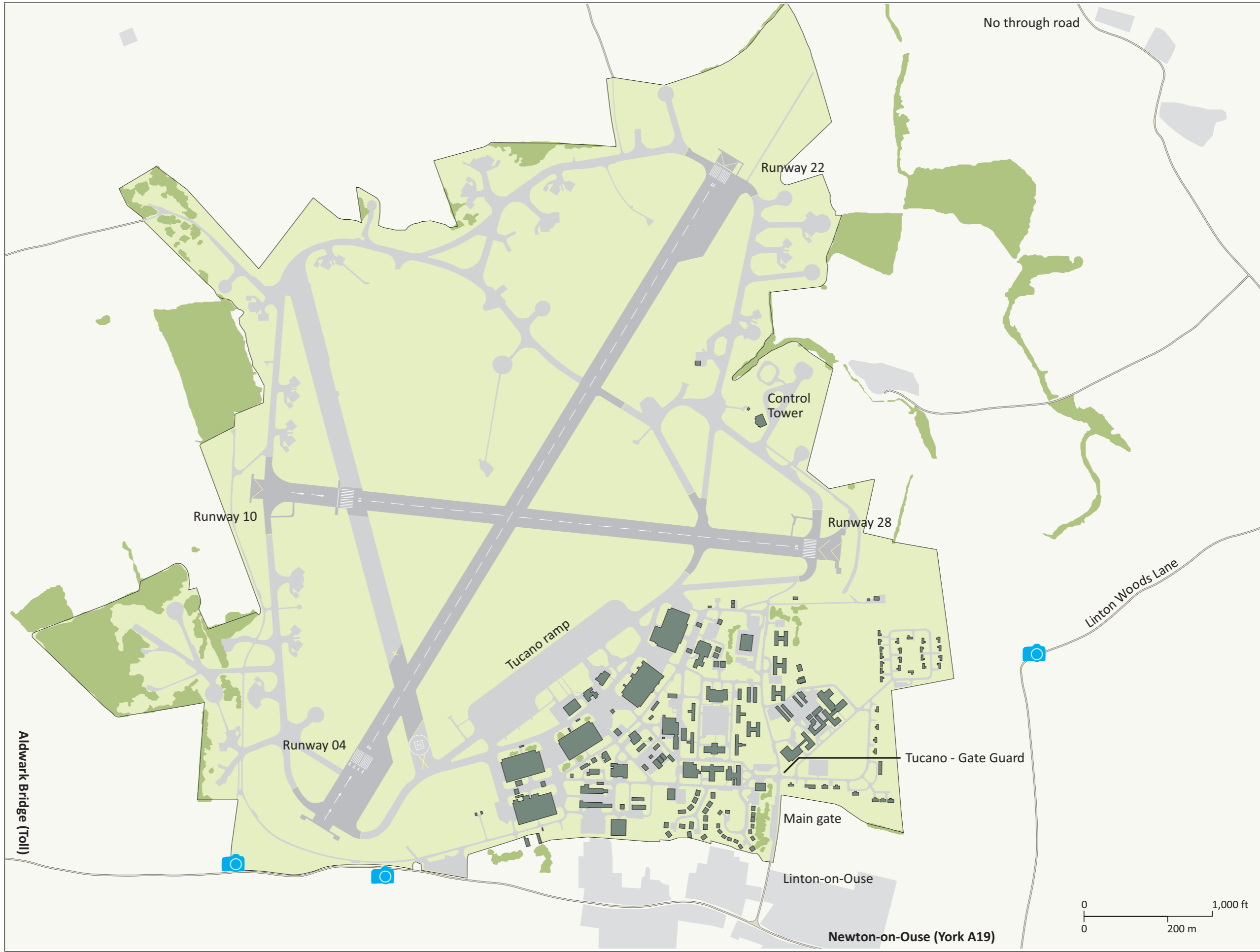
- Air Experience Flight Tutor T1\*
- 9 Air Experience Flight Tutor T1\*

\*RAF Church Fenton  
<http://www.raf.mod.uk/raflintononouse/>

**RADIO FREQUENCIES**

Frequency	Usage
278.325	Ground
136.125	Tower
240.825	Tower
283.725	ATIS
281.825	Departures
125.575	Approach
372.125	Approach
369.025	PAR 1
375.575	PAR 2
118.550	Zone
235.200	Zone
134.150	Radar
275.850	Director
362.075	Operations
233.250	Air/Air
244.500	Air/Air
258.825	Air/Air
264.875	Air/Air
368.800	Air/Air
378.050	Air/Air
379.700	Air/Air
396.850	Air/Air

Source: [www.milscanners.co.uk](http://www.milscanners.co.uk)



**Disclaimer**

The information within this map is based upon or drawn from various authoritative sources and whilst all reasonable care has been taken in the preparation of this map no warranties can be given as to its accuracy and/or no reliance should be placed upon the same without further detailed inspection and survey. The publishers cannot therefore accept any liability or responsibility for any loss or damage and indeed would be grateful to receive notification of any errors or inconsistencies. No reproduction whatsoever of this map or any part thereof is permitted without the prior consent of the copyright owners.

Respect the land around the base, and do not trespass on or damage any property. Take your rubbish and litter home with you. Do not park in front of crash gates, or on the access tracks leading to them. You will almost certainly be asked move your vehicle as parking here can impede rapid access by the airfield crews to any emergency.

Cartography and designed P. Bush  
 Map reproduced using imagery from Google Maps

© March 2011. Revised December 2011  
 Reproduction of the contents of this map in any manner whatsoever is prohibited without the prior consent of the publisher.

[www.pb-photos.com](http://www.pb-photos.com)

# UK MILITARY AIRFIELDS GUIDE

Peregrine Bush



- 78 pages
- A4 (210mm x 297mm)
- Full colour

**£21.99**

plus Postage & packing

## Key Features:

- UK location map of all military airfields
- Full coverage of 23 major operational airfields. Includes detailed airfield map, a brief description, active flying units and airfield radio frequencies
- Coverage of 29 minor military, satellite and recently closed airfields in the UK. Includes airfield map, a brief description, active flying units and radio frequencies
- List of other airfields used by the Volunteer Gliding Squadrons
- UK map of Low Fly Areas (LFAs)
- Summary of stations, squadrons and aircraft type

The first edition of UK Military Airfields Guide is a comprehensive book of military airfield establishments.

This guide has been produced for aviation enthusiasts, spotters and photographers. It includes the United Kingdom's military airfield establishments featuring full colour maps of the Royal Air Force, Royal Navy, British Army, United States Air Force and the Ministry of Defence.

This essential guide features maps of the major operational airfields with associated units with airfield radio frequencies plus maps of minor, satellite and recently closed airfields.

A brief commentary has been provided to illustrate the operator, units and activities to the airfield. Where possible a location for airfield observation and photography is provided.

Additionally a useful guide listed by number to the squadrons and units at each of the airfields featured in this publication.

**Available to buy now from**  
**[www.pb-photos.com](http://www.pb-photos.com)**

or

**[Lulu.com](http://Lulu.com)**